

01923 270 666  
Kings Langley, Abbots  
Langley & Watford:  
01442 822 210  
Property  
Management  
01442 879 996  
Berkhamsted Select  
& Country Homes:  
01442 828 222  
Tring, Wendover,  
Aylesbury & Villages:

Is there a price that would tempt you to sell or let your property? Contact us for a free valuation and let's see if we can tempt you!

# Temptation comes in many forms...



# Tring

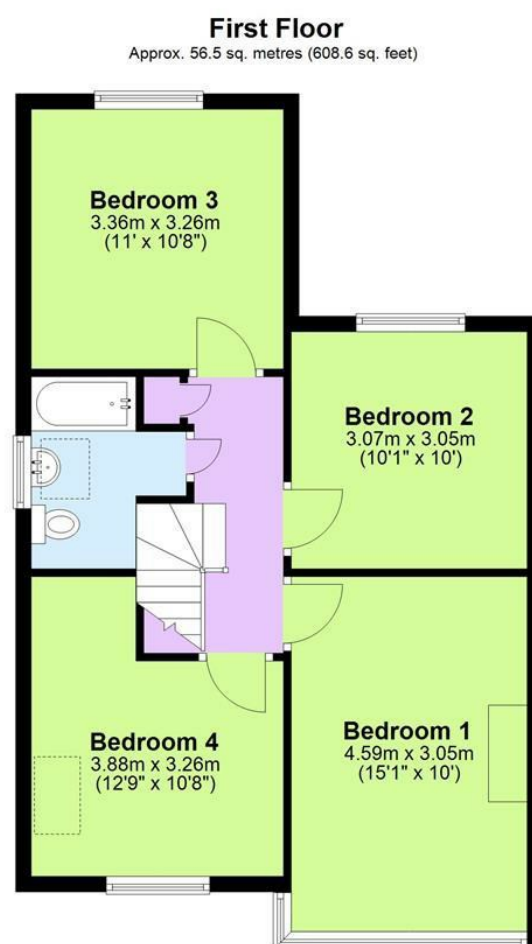
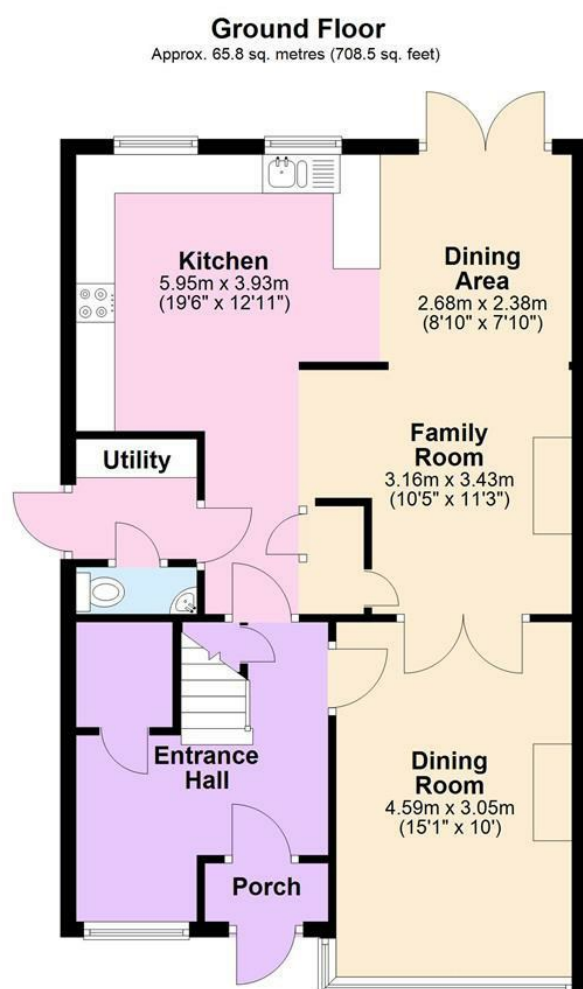
ASKING PRICE

£750,000

" SALE AGREED PRIOR TO ADVERTISING AS PART OF OUR DISCREET MARKETING CAMPAIGN" An immaculately presented 1930's family home which has been extended by the current owners to offer a wonderful open plan kitchen/dining/family room at the rear with wood burning stove, separate utility room and cloakroom. The spacious entrance hall has a study area while the first floor has four double bedrooms and family bathroom.

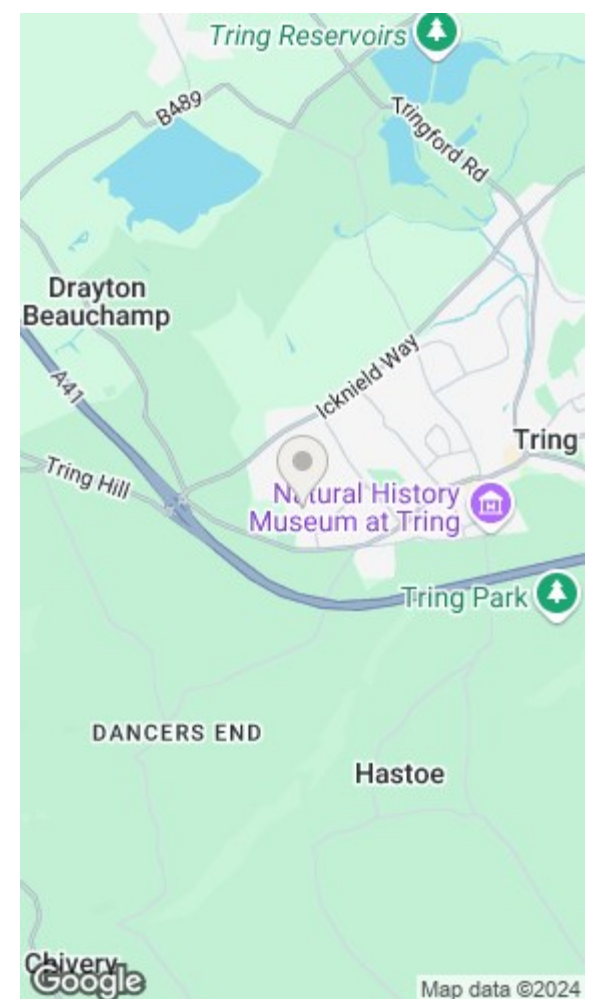


[www.sterlinghomes.co.uk](http://www.sterlinghomes.co.uk)



Total area: approx. 122.4 sq. metres (1317.1 sq. feet)

All measurements are approximate.  
Plan produced using PlanUp.



Energy Efficiency Rating		Environmental Impact (CO <sub>2</sub> ) Rating	
Current	Potential	Current	Potential
69	83		

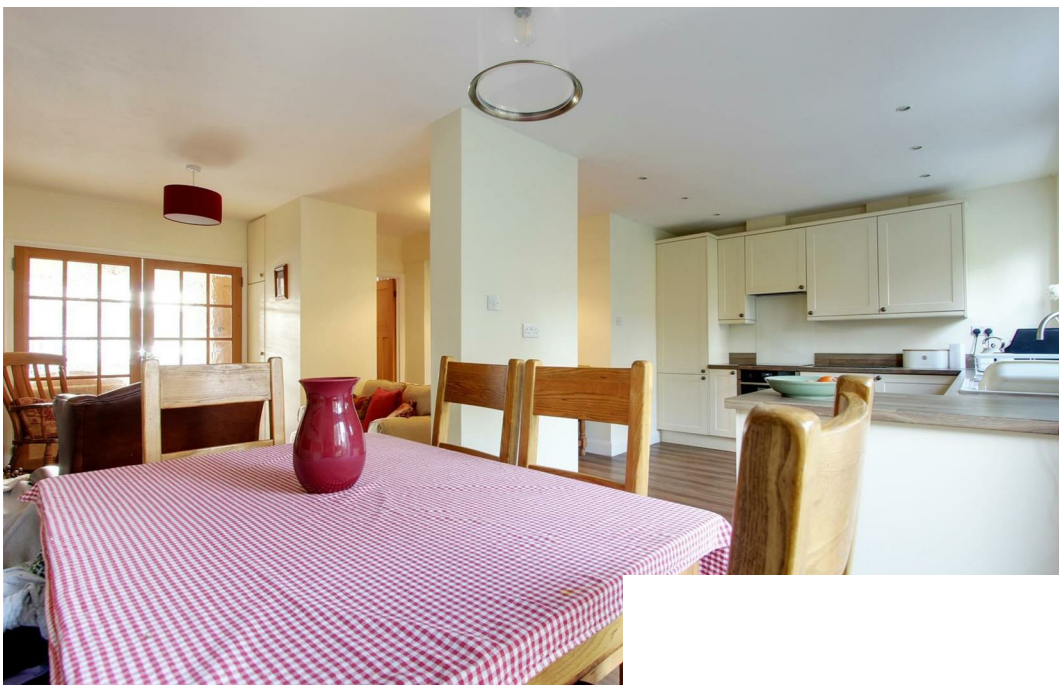
Energy Efficiency Rating: 69 (Current), 83 (Potential). Environmental Impact (CO<sub>2</sub>) Rating: Current and Potential ratings are not specified in the image.



[www.sterlinghomes.co.uk](http://www.sterlinghomes.co.uk)



[www.sterlinghomes.co.uk](http://www.sterlinghomes.co.uk)



[www.sterlinghomes.co.uk](http://www.sterlinghomes.co.uk)



[www.sterlinghomes.co.uk](http://www.sterlinghomes.co.uk)